

Section 1. PRODUCT DESCRIPTION

SCREW FOR DECK BOARD CLIPS – WT

Screw WT is made of stainless steel A2. It is designed for hidden fixing of decking boards with the use of clips in tongue and groove joints. Screws can be used in exotic hardwood, chipboard, plywood, wood, sterling board, MDF board.



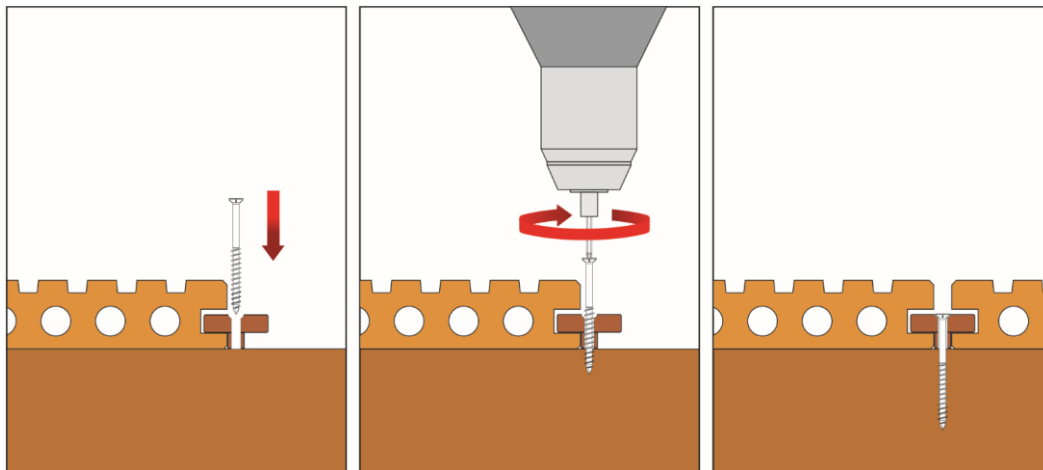
Features and advantages of screws:

- counter-sunk head – ensures flush fitting of the screw in the installed member
- TX drive – guarantees optimum torque transfer
- Cutting ribs and special shaped 6mm head – screw together with a suitable clip for tongue and groove joints make the decking safe and reliable for users
- serrated thread – cuts wood structural fibres as the screw advances
- special cutting point – makes for a quick start installation of the screw and prevents wood from splitting

Screws conform to European standard: EN 14592+A1:2012

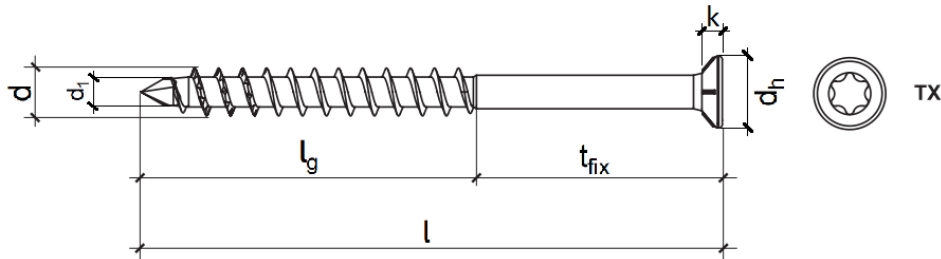
Section 2. METHOD OF INSTALLATION

1. Original screws delivered by the manufacturer can be used only
2. Before installation select adequate length of screws depending on thickness of elements to be fastened and minimum anchorage depth
3. The fastened wooden elements should be defect-free (no knots, cracks, colourations, rots, structure and shape defects, mechanical damages) as any defects reduce their strength
4. Screws should be installed using screw gun and bit suitable for TX drive
5. Screws should be driven directly in wooden substrate without prior drilling



PRODUCT DATA SHEET – WT

Section 3. TECHNICAL DATA



TECHNICAL PARAMETERS		
Parameter	Unit	Value
Thread outer diameter	d [mm]	4
Thread inner diameter	d ₁ [mm]	2,87
Smooth part diameter	d _s [mm]	-
Head diameter	d _n [mm]	6,09
Head height	k [mm]	2,4
Head area	A [mm ²]	29
Length range	l [mm]	45
Drive type	-	TX-15
Screw material	-	stainless steel A2
European standard	-	EN 14592+A1:2012

STRENGTH PARAMETERS		
Parameter	Unit	ø4
Material characteristic yield strength	M _{y,k} [Nm]	6,109
Characteristic pull-out resistance	f _{ax,k,90} [N/mm ²]	17,00
Characteristic resistance to head pull-through	f _{head,k} [N/mm ²]	29,21
Characteristic resistance for tension	f _{tens,k} [kN]	6,94
Characteristic torsional strength	f _{tor,k} [Nm]	3,78
Screw resistance factor	R _{tor,k} [Nm]	2,05

SELECTION TABLE						
Product marking	Screw diameter	Screw length	Working thread length	Usable length	Drive type	Number of pieces in a box
	d [mm]	l [mm]	l _g [mm]	t _{fix} [mm]	[-]	pcs
WT-40045-A2	4,0	45	30	15	TX-15	200

Section 4. REMARKS

1. All previous versions of this Product Data Sheet shall cease to be valid
2. Data given in this Product Data Sheet is in accordance with current knowledge and published in good faith. KLIMAS Sp. z o.o. is not responsible for correctness and quality of the fixing if recommendations regarding method of use and installation are not followed.